

Reduce the risk



Checklist for cellar door sales

- Provide training** for cellar door sales staff and tour operators including information on phylloxera protocols.
- Make sure all staff know the names and locations of phylloxera infested regions in Victoria and NSW.
- Be aware** of and actively manage the movement of visitors.
- Use signage** – particularly at main entrance, cellar door entrance and adjacent to vineyards – asking that visitors do not enter vineyards without permission.
- Restrict access** where possible with fences and locked gates.
- Provide gravel or sealed driveways** and hard stand carparks remote from vineyards and unshaded.
- Provide information and resources** to visitors about the risk and consequences of spreading phylloxera.
- Run guided tours** rather than allowing unsupervised entry. Discourage activities like picnics and taking photographs among the vines.
- Where appropriate, **provide footbaths or footwear washing facilities**.
- For special events, seek advice from PGIBSA on how to minimise risk and use the opportunity to educate visitors.

See the *PGIBSA Phylloxera Prevention Protocol* for more detailed information on the protocols.



Phylloxera and Grape Industry
Board of South Australia

(08) 8362 0488 | www.phylloxera.com.au

Reduce the risk



Checklist for cellar door sales

- Provide training** for cellar door sales staff and tour operators including information on phylloxera protocols.
- Make sure all staff know the names and locations of phylloxera infested regions in Victoria and NSW.
- Be aware** of and actively manage the movement of visitors.
- Use signage** – particularly at main entrance, cellar door entrance and adjacent to vineyards – asking that visitors do not enter vineyards without permission.
- Restrict access** where possible with fences and locked gates.
- Provide gravel or sealed driveways** and hard stand carparks remote from vineyards and unshaded.
- Provide information and resources** to visitors about the risk and consequences of spreading phylloxera.
- Run guided tours** rather than allowing unsupervised entry. Discourage activities like picnics and taking photographs among the vines.
- Where appropriate, **provide footbaths or footwear washing facilities**.
- For special events, seek advice from PGIBSA on how to minimise risk and use the opportunity to educate visitors.

See the *PGIBSA Phylloxera Prevention Protocol* for more detailed information on the protocols.



Phylloxera and Grape Industry
Board of South Australia

(08) 8362 0488 | www.phylloxera.com.au

Reduce the risk



Checklist for cellar door sales

- Provide training** for cellar door sales staff and tour operators including information on phylloxera protocols.
- Make sure all staff know the names and locations of phylloxera infested regions in Victoria and NSW.
- Be aware** of and actively manage the movement of visitors.
- Use signage** – particularly at main entrance, cellar door entrance and adjacent to vineyards – asking that visitors do not enter vineyards without permission.
- Restrict access** where possible with fences and locked gates.
- Provide gravel or sealed driveways** and hard stand carparks remote from vineyards and unshaded.
- Provide information and resources** to visitors about the risk and consequences of spreading phylloxera.
- Run guided tours** rather than allowing unsupervised entry. Discourage activities like picnics and taking photographs among the vines.
- Where appropriate, **provide footbaths or footwear washing facilities**.
- For special events, seek advice from PGIBSA on how to minimise risk and use the opportunity to educate visitors.

See the *PGIBSA Phylloxera Prevention Protocol* for more detailed information on the protocols.



Phylloxera and Grape Industry
Board of South Australia

(08) 8362 0488 | www.phylloxera.com.au

Facts on phylloxera

- Phylloxera is the world's worst grapevine pest.
- It is a small yellow insect (pictured right) that lives on the roots of grapevines.
- It feeds on the roots and damages them, eventually killing the vine.
- It has no effect on grape or wine quality and does not affect human health.
- Phylloxera cannot be eradicated. It can only be managed by replanting all affected vineyards with vines grafted on phylloxera-resistant rootstocks.
- An outbreak of phylloxera would devastate a grape-growing region, cause major economic hardship and result in the loss of precious old vines.
- Phylloxera can be spread by movement of grapevine material, grape products, machinery, people and vehicles.
- More than 90% of Australia's grapegrowing regions are currently free of phylloxera.
- Growers, contractors and wineries need to take responsibility for protecting their vineyards and regions by implementing protocols to prevent the accidental introduction of phylloxera.



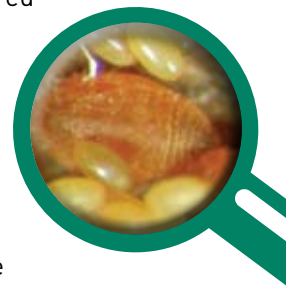
(08) 8362 0488

www.phylloxera.com.au

HELP KEEP OUR VINEYARDS PHYLLOXERA FREE

Facts on phylloxera

- Phylloxera is the world's worst grapevine pest.
- It is a small yellow insect (pictured right) that lives on the roots of grapevines.
- It feeds on the roots and damages them, eventually killing the vine.
- It has no effect on grape or wine quality and does not affect human health.
- Phylloxera cannot be eradicated. It can only be managed by replanting all affected vineyards with vines grafted on phylloxera-resistant rootstocks.
- An outbreak of phylloxera would devastate a grape-growing region, cause major economic hardship and result in the loss of precious old vines.
- Phylloxera can be spread by movement of grapevine material, grape products, machinery, people and vehicles.
- More than 90% of Australia's grapegrowing regions are currently free of phylloxera.
- Growers, contractors and wineries need to take responsibility for protecting their vineyards and regions by implementing protocols to prevent the accidental introduction of phylloxera.



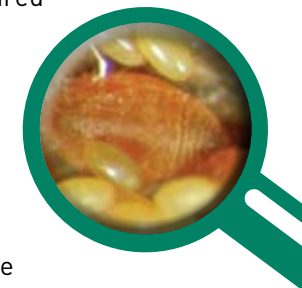
(08) 8362 0488

www.phylloxera.com.au

HELP KEEP OUR VINEYARDS PHYLLOXERA FREE

Facts on phylloxera

- Phylloxera is the world's worst grapevine pest.
- It is a small yellow insect (pictured right) that lives on the roots of grapevines.
- It feeds on the roots and damages them, eventually killing the vine.
- It has no effect on grape or wine quality and does not affect human health.
- Phylloxera cannot be eradicated. It can only be managed by replanting all affected vineyards with vines grafted on phylloxera-resistant rootstocks.
- An outbreak of phylloxera would devastate a grape-growing region, cause major economic hardship and result in the loss of precious old vines.
- Phylloxera can be spread by movement of grapevine material, grape products, machinery, people and vehicles.
- More than 90% of Australia's grapegrowing regions are currently free of phylloxera.
- Growers, contractors and wineries need to take responsibility for protecting their vineyards and regions by implementing protocols to prevent the accidental introduction of phylloxera.



(08) 8362 0488

www.phylloxera.com.au

HELP KEEP OUR VINEYARDS PHYLLOXERA FREE