

Reduce the risk



Checklist for growers and vineyard managers

- Provide training** for all vineyard workers including casual and contract labour on phylloxera protocols.
- Restrict access to vineyards** as much as possible with fences and locked gates.
- Use signs** to advise conditions and restrictions on entry to the property (including contact phone number for people to ring if access is required).
- Control visitor access.** Require all visitors to report on arrival. Keep a visitor log for all site visitors including contractors. Ask all visitors whether they have visited a vineyard in another region in the past week.
- Control vehicle access.** Provide visitor parking away from vines and do not allow unauthorised vehicles to drive within the vineyard.
- Check machinery.** Make sure machinery is clean before it starts work on your property. Provide a wash-down facility and require contractors to clean machinery before leaving. Make sure contractors have met legal requirements for cleaning and heat treatment of machinery if it has come from interstate.
- Where appropriate, **provide footbaths for cleaning footwear** – especially for contract workers or visitors who have recently been in vineyards in other regions (eg GLOs, winemakers).

See the *PGIBSA Phylloxera Prevention Protocol* for more detailed information on the protocols.



Phylloxera and Grape Industry
Board of South Australia

(08) 8362 0488 | www.phylloxera.com.au

ORIGINAL DESIGN CONCEPT – MORNINGTON PENINSULA VIGNERONS' ASSOCIATION.

Reduce the risk



Checklist for growers and vineyard managers

- Provide training** for all vineyard workers including casual and contract labour on phylloxera protocols.
- Restrict access to vineyards** as much as possible with fences and locked gates.
- Use signs** to advise conditions and restrictions on entry to the property (including contact phone number for people to ring if access is required).
- Control visitor access.** Require all visitors to report on arrival. Keep a visitor log for all site visitors including contractors. Ask all visitors whether they have visited a vineyard in another region in the past week.
- Control vehicle access.** Provide visitor parking away from vines and do not allow unauthorised vehicles to drive within the vineyard.
- Check machinery.** Make sure machinery is clean before it starts work on your property. Provide a wash-down facility and require contractors to clean machinery before leaving. Make sure contractors have met legal requirements for cleaning and heat treatment of machinery if it has come from interstate.
- Where appropriate, **provide footbaths for cleaning footwear** – especially for contract workers or visitors who have recently been in vineyards in other regions (eg GLOs, winemakers).

See the *PGIBSA Phylloxera Prevention Protocol* for more detailed information on the protocols.



Phylloxera and Grape Industry
Board of South Australia

(08) 8362 0488 | www.phylloxera.com.au

ORIGINAL DESIGN CONCEPT – MORNINGTON PENINSULA VIGNERONS' ASSOCIATION.

Reduce the risk



Checklist for growers and vineyard managers

- Provide training** for all vineyard workers including casual and contract labour on phylloxera protocols.
- Restrict access to vineyards** as much as possible with fences and locked gates.
- Use signs** to advise conditions and restrictions on entry to the property (including contact phone number for people to ring if access is required).
- Control visitor access.** Require all visitors to report on arrival. Keep a visitor log for all site visitors including contractors. Ask all visitors whether they have visited a vineyard in another region in the past week.
- Control vehicle access.** Provide visitor parking away from vines and do not allow unauthorised vehicles to drive within the vineyard.
- Check machinery.** Make sure machinery is clean before it starts work on your property. Provide a wash-down facility and require contractors to clean machinery before leaving. Make sure contractors have met legal requirements for cleaning and heat treatment of machinery if it has come from interstate.
- Where appropriate, **provide footbaths for cleaning footwear** – especially for contract workers or visitors who have recently been in vineyards in other regions (eg GLOs, winemakers).

See the *PGIBSA Phylloxera Prevention Protocol* for more detailed information on the protocols.



Phylloxera and Grape Industry
Board of South Australia

(08) 8362 0488 | www.phylloxera.com.au

ORIGINAL DESIGN CONCEPT – MORNINGTON PENINSULA VIGNERONS' ASSOCIATION.

Facts on phylloxera

- Phylloxera is the world's worst grapevine pest.
- It is a small yellow insect (pictured right) that lives on the roots of grapevines.
- It feeds on the roots and damages them, eventually killing the vine.
- It has no effect on grape or wine quality and does not affect human health.
- Phylloxera cannot be eradicated. It can only be managed by replanting all affected vineyards with vines grafted on phylloxera-resistant rootstocks.
- An outbreak of phylloxera would devastate a grape-growing region, cause major economic hardship and result in the loss of precious old vines.
- Phylloxera can be spread by movement of grapevine material, grape products, machinery, people and vehicles.
- More than 90% of Australia's grapegrowing regions are currently free of phylloxera.
- Growers, contractors and wineries need to take responsibility for protecting their vineyards and regions by implementing protocols to prevent the accidental introduction of phylloxera.



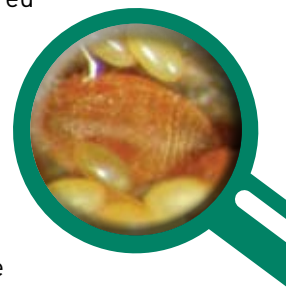
(08) 8362 0488

www.phylloxera.com.au

HELP KEEP OUR VINEYARDS PHYLLOXERA FREE

Facts on phylloxera

- Phylloxera is the world's worst grapevine pest.
- It is a small yellow insect (pictured right) that lives on the roots of grapevines.
- It feeds on the roots and damages them, eventually killing the vine.
- It has no effect on grape or wine quality and does not affect human health.
- Phylloxera cannot be eradicated. It can only be managed by replanting all affected vineyards with vines grafted on phylloxera-resistant rootstocks.
- An outbreak of phylloxera would devastate a grape-growing region, cause major economic hardship and result in the loss of precious old vines.
- Phylloxera can be spread by movement of grapevine material, grape products, machinery, people and vehicles.
- More than 90% of Australia's grapegrowing regions are currently free of phylloxera.
- Growers, contractors and wineries need to take responsibility for protecting their vineyards and regions by implementing protocols to prevent the accidental introduction of phylloxera.



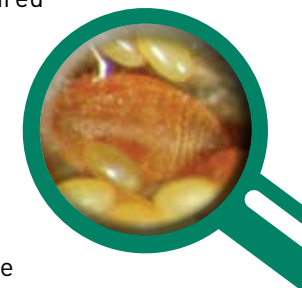
(08) 8362 0488

www.phylloxera.com.au

HELP KEEP OUR VINEYARDS PHYLLOXERA FREE

Facts on phylloxera

- Phylloxera is the world's worst grapevine pest.
- It is a small yellow insect (pictured right) that lives on the roots of grapevines.
- It feeds on the roots and damages them, eventually killing the vine.
- It has no effect on grape or wine quality and does not affect human health.
- Phylloxera cannot be eradicated. It can only be managed by replanting all affected vineyards with vines grafted on phylloxera-resistant rootstocks.
- An outbreak of phylloxera would devastate a grape-growing region, cause major economic hardship and result in the loss of precious old vines.
- Phylloxera can be spread by movement of grapevine material, grape products, machinery, people and vehicles.
- More than 90% of Australia's grapegrowing regions are currently free of phylloxera.
- Growers, contractors and wineries need to take responsibility for protecting their vineyards and regions by implementing protocols to prevent the accidental introduction of phylloxera.



(08) 8362 0488

www.phylloxera.com.au

HELP KEEP OUR VINEYARDS PHYLLOXERA FREE